

TRIA



TRIA

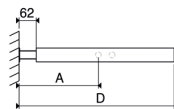
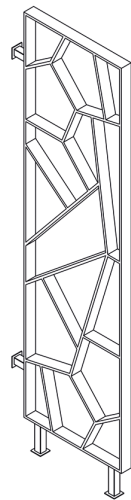
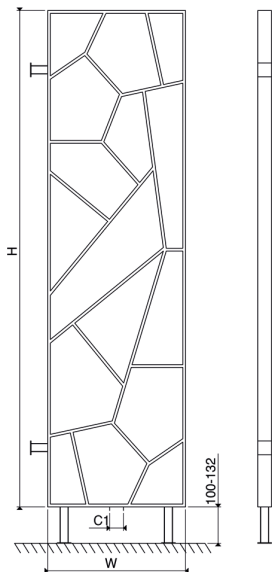
Material	Stock Finishes	Guarantee	Installation
Stainless Steel	PLS SEE COLOUR KEY CHART - Click for Link	20 Years	Vertical

PRODUCT CODE	Height (mm)	Width (mm)	Sections	Pipe Centers (mm)	Wall to pipe Centers	Wall Distance	Nett Weight (kg)	Water Content (lt)	Fuel Type	Heat Outputs	
	H	W	n	C1	A (mm)	D (mm)				Watts	BTU
TRA 0500180021	1800	500	21	50	287	562	15,8	6,5	C	1074	3664

Please add finishing code at the end of the product code

Code example : TRA 0500180021 STP

Fuel type i.e
 C: Central Heating
 E: Electrical Heating
 D: Dual Heating (C+E)



n = number of sections
 Max. working pressure 10 bar
 Max. working temperature 95 °C
 Connections 1/2"
 Pipe centers C1 50 mm